



MB300

Multi-Bio Time Attendance Terminal

The new MB300 is an innovative product featured with ZK advanced fingerprint and face recognition technologies. It supports multiple verification methods including face, fingerprint, password and those combinations. Multi-model communications consisting of TCP/IP, USB host allow an extremely easy data management. What's more, the new industrial design can be suitable for commercial markets, such as enterprise, bank and factory.

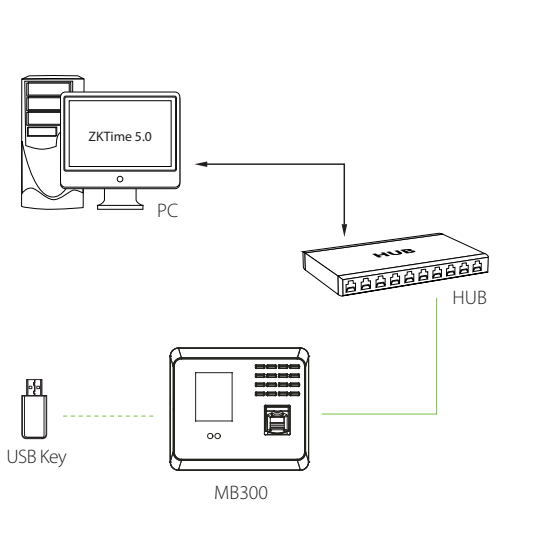
Features

- 400 Faces, 500 Fingerprints, optional 1000 Cards and 80000 Records
- Multi-languages
- Communication: TCP/IP, USB-host
- High verification speed
- Professional firmware and platform make it more flexible
- Intuitive and stunning UI design

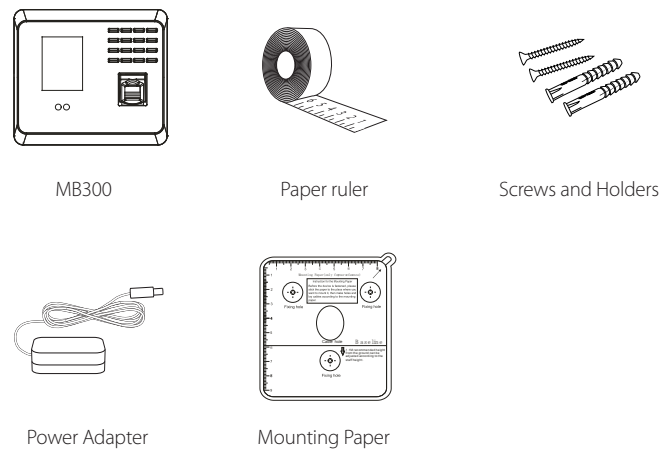
Specifications

Face Capacity	400
Fingerprint Capacity	500
ID Card Capacity	1,000 (Optional)
Record Capacity	80,000
Display	2.8-inch TFT Screen
Communication	TCP/IP,USB-host
Standard Functions	Work Code, SMS, DST, Scheduled-bell, Self-Service Query, Automatic Status Switch, T9 Input, Photo ID, Camera
Optional Functions	ID/Mifare Cards
Software	ZKTime 5.0
Power Supply	DC5V 0.8A
Verification Speed	≤0.5 Sec.
Operating Temp.	0°C - 45°C
Operating Humidity	20% - 80%
Dimension	167.5×148.8×32.2mm (Length×Width×Thickness)
Net Weight	380 G

Configuration



What's in the Box



ZKTeco Inc.
E-mail: sales@zkteco.com
www.zkteco.com

© Copyright 2014. ZKTeco Inc. ZKTeco Logo is a registered trademark of ZKTeco or a related company. All other product and company names mentioned are used for identification purposes only and may be the trademarks of their respective owners. All specifications are subject to change without notice. All rights reserved.

